



INSTRUCTION MANUAL

SIEMENS SIMATIC BACKUP AND RESTORE



TG raf ehf.

Staðarsund 7

240 Grindavík

Iceland

Tel: +354 426 76 60

Mobile: +354 781 21 31 (Arinbjörn Kristinsson)

Document number: LB-001

Version: 2

Responsible: Arinbjörn Kristinsson

Date: 4 March 2017

Contents

S7-1200 PLC (CPU)	1
Backup.....	1
Restore.....	1
HMI (Panel)	2
Software method	2
Download and setup	2
Preparation of PC	2
Backup.....	5
Restore	6
OS upgrade and factory reset	7
USB method	8
Backup.....	8
Restore	10

S7-1200 PLC (CPU)

Backup

The way to back up a S7-1200 PLC (CPU) program is to create a Siemens backup SD card with the engineering systems TIA Portal which is done by TG raf.



Restore

- 1) power off the CPU
- 2) insert the card into the CPU card slot
- 3) power on the CPU, "**ERROR**" and "**MAINT**" lamp flickering red and yellow lamps
- 4) when only "**MAINT**" lamp flickering yellow, power off the CPU, and pull out the memory card
- 5) power on CPU

HMI (Panel)

Software method

Download and setup

Simatic ProSave is a free software that can be used to Backup, Restore, and create an OS update for Siemens Simatic products without the installation of the engineering systems e.g. for service purposes. TG raf has an online download location for their costumes to download ProSave. ProSave can also be downloaded directly from Siemens for registries users.

❖ TG raf download site:

➤ <https://www.dropbox.com/sh/ltmcyfuedpe9es/AABPEIaujeI55MFHiFi6vle1a?dl=0>

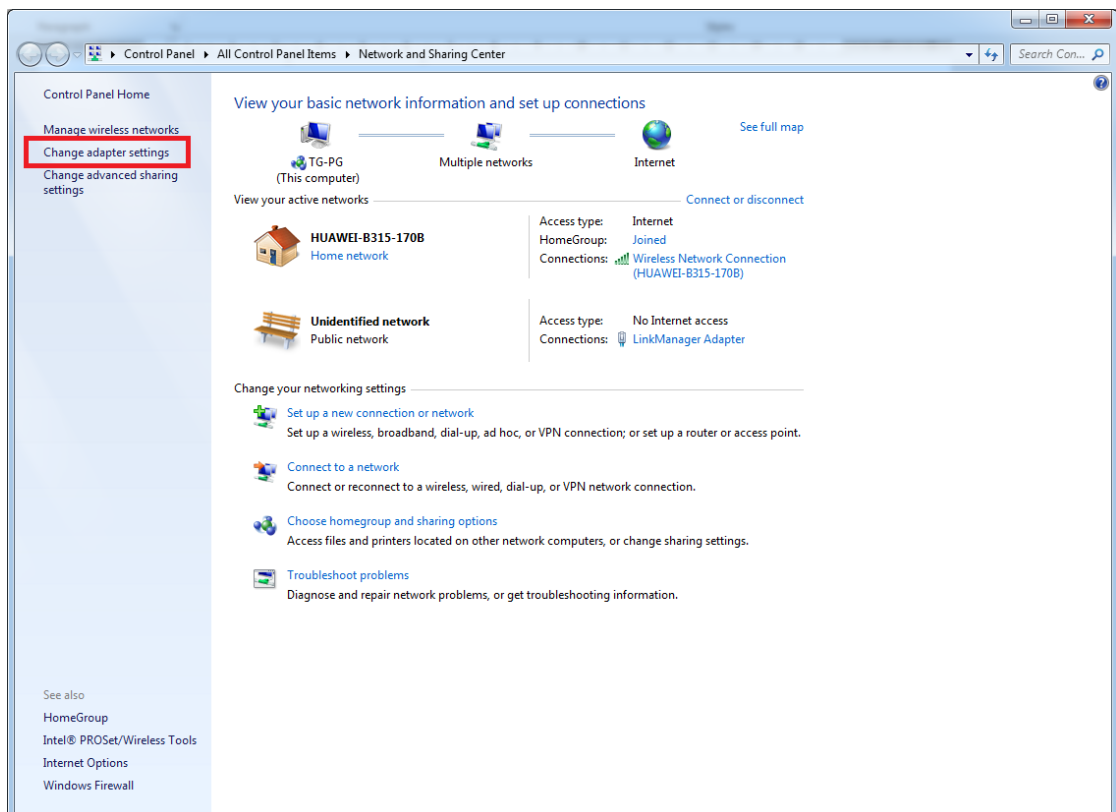
❖ Siemens download site:

➤ <https://support.industry.siemens.com/cs/document/10347815/servicetool-simatic-prosave?dti=0&lc=en-WW>

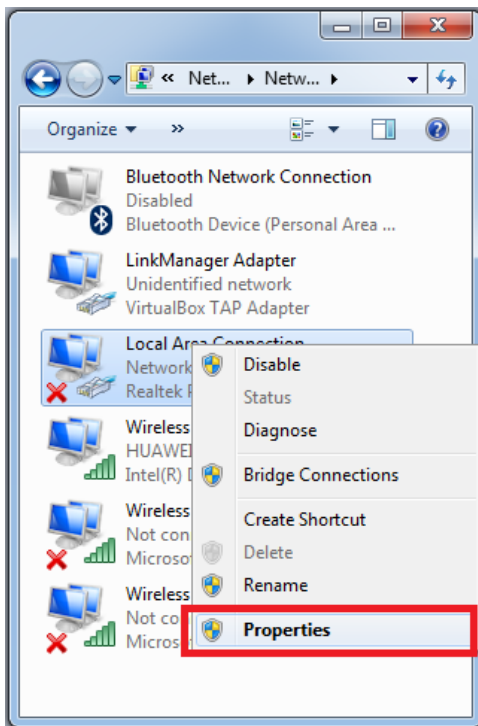
Preparation of PC

To set a static IP on your Windows computer:

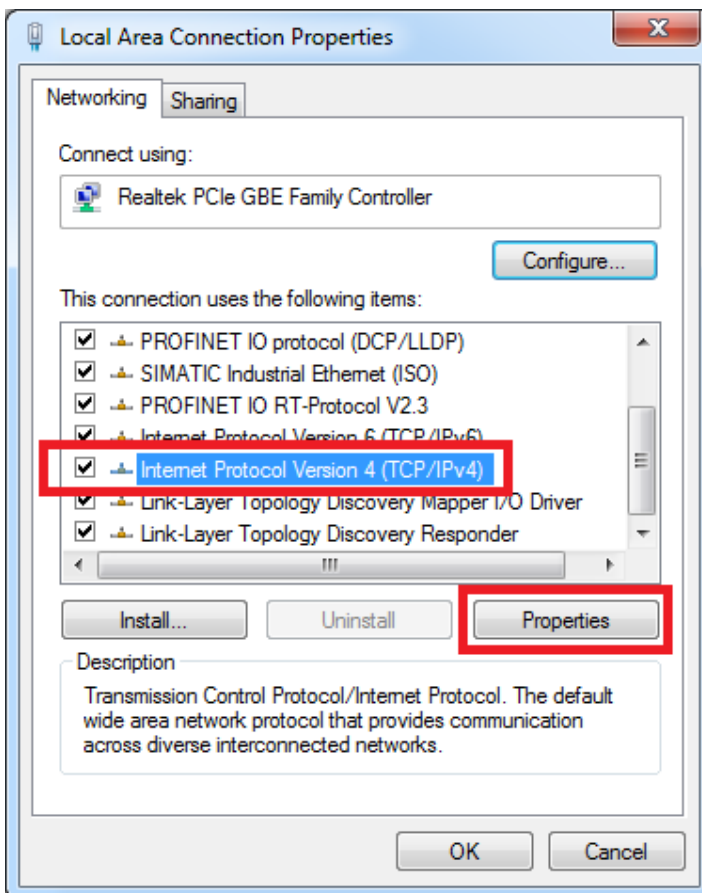
- 1) Click **Start Menu > Control Panel > Network and Sharing Center**. (For Windows 8 and higher, search for and open Control Panel and select Network And Internet).
- 2) Click **Change adapter settings**.



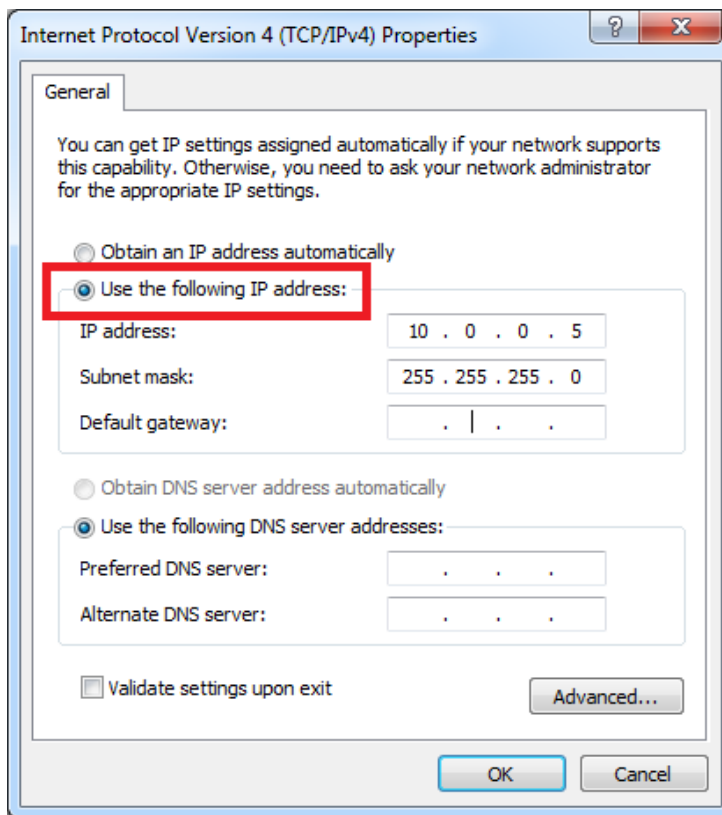
3) Right-click on **Local Area Connection** and click on **Properties**.



4) Select **Internet Protocol Version 4 (TCP/IPv4)** and click on **Properties**.

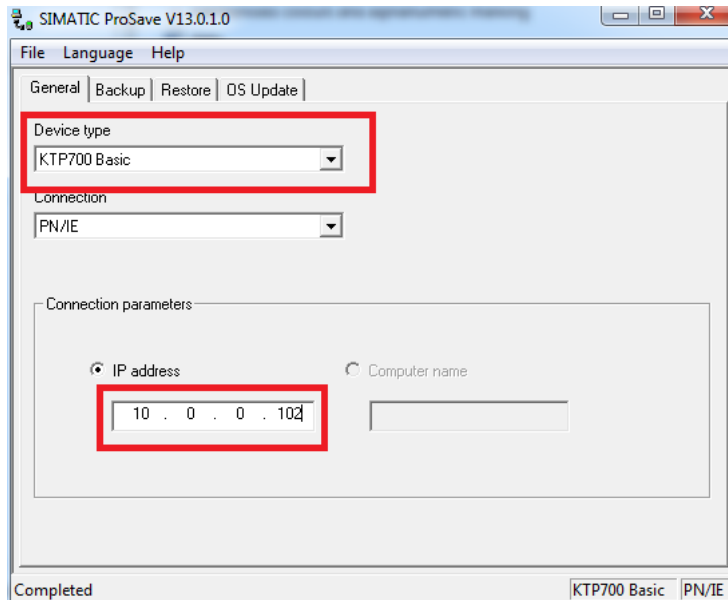


- 5) Select "Use the following IP address" and enter the IP address, Subnet Mask, Default Gateway, and DNS server. Click **OK** and close the **Local Area Connection** properties window.



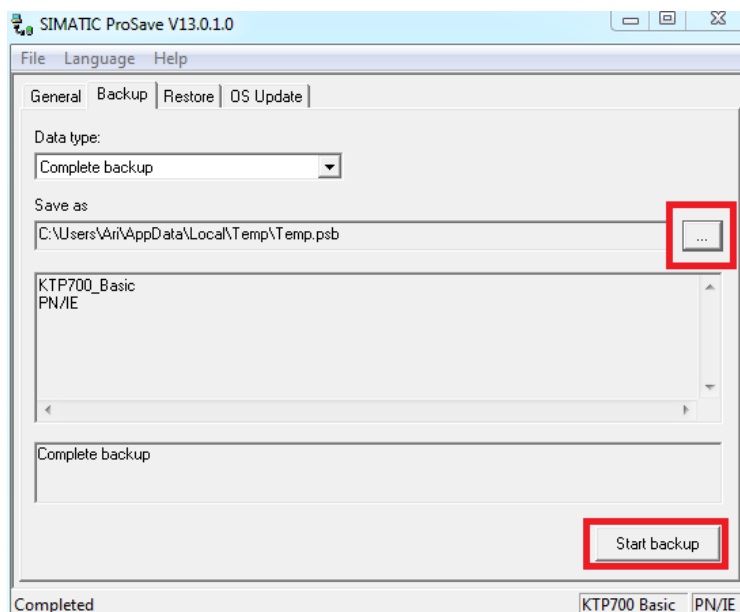
Backup

- 1) Power on the panel.
- 2) Connect a standard Ethernet cable between the PC and the panel either directly or via a switch/hub.
- 3) Open the ProSafe Software.
- 4) Select the corresponding Device under “**Device type**” and insert the **IP address** of the Device.



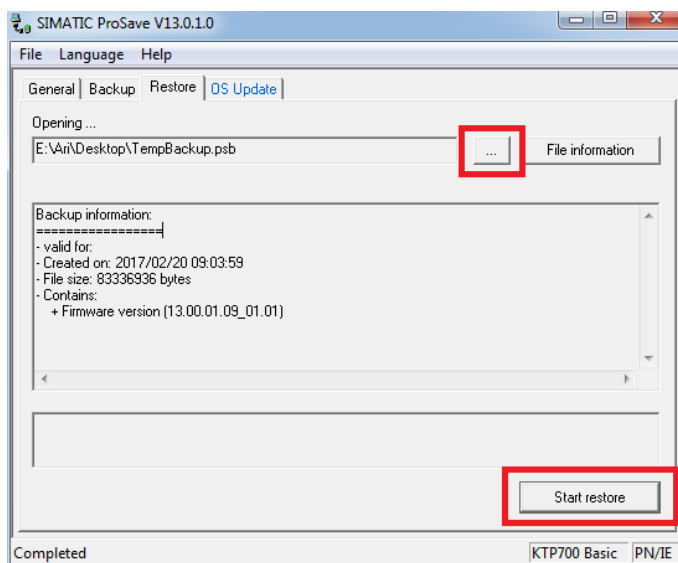
- 5) Select the **Backup** tab and chose a location for the backup by clicking the “...” button and press the “**Start backup**”.

 - a. TG raf’s way of naming the backup file is as followed:
 - i. DeviceType_IPAddress_ShortDescription_Date:yymmdd e.g.
KTP1200Basic_IP100_IFL_170220.psb



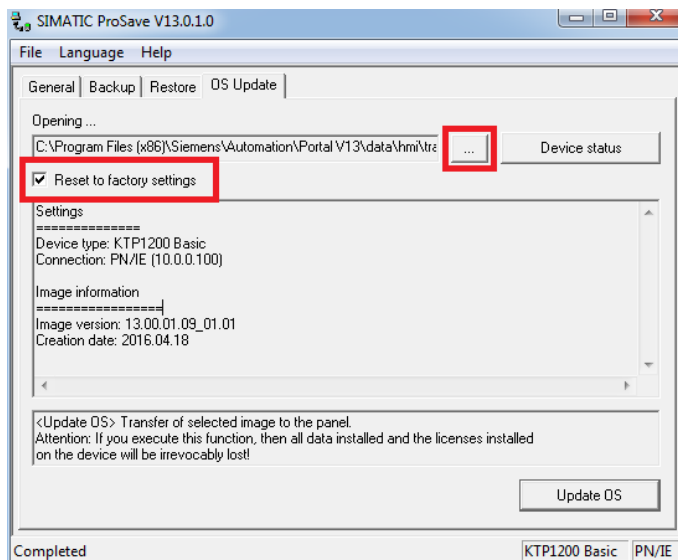
Restore

- 1) Power on the panel
- 2) If the panel is new, then select “**Settings**” and click on “**Network interface**” if it’s in operation then proceed to step 6
- 3) Set “**DHCP:**” to “**OFF**”
- 4) Insert the devices IP address, ask a technician at TG raf for the IP address if it un known
- 5) Insert “**255.255.255.0**” into “**Subnet mask**” and press “**Transfer**”
- 6) Connect a standard Ethernet cable between the PC and the panel either directly or via a switch/hub.
- 7) Open the ProSafe Software.
- 8) Select the corresponding Device under “**Device type**” and insert the **IP address** of the Device.
- 9) Select the **Restore** tab and chose the location of the backup file to be by clicking the “...” button and press the “**Start restore**”.



OS upgrade and factory reset

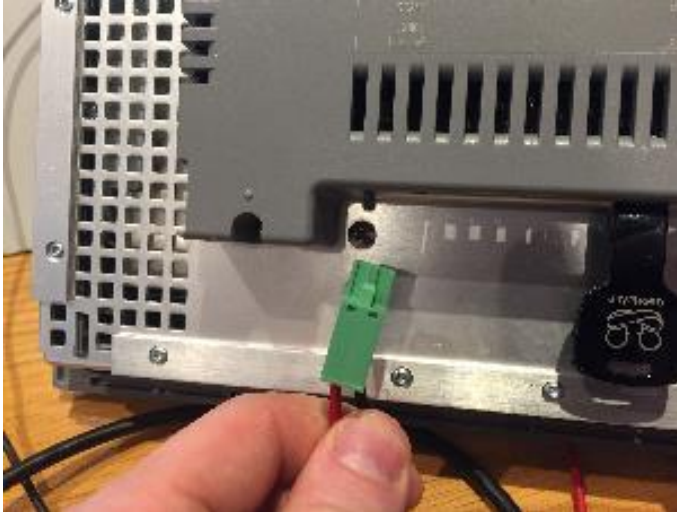
- 1) Power on the panel
- 2) If the panel is new, then select **“Settings”** and click on **“Network interface”** if it’s in operation then proceed to step 6
- 3) Set **“DHCP:”** to **“OFF”**
- 4) Insert the devices IP address, ask a technician at TG raf for the IP address if it un known
- 5) Insert **“255.255.255.0”** into **“Subnet mask”** and press **“Transfer”**
- 6) Connect a standard Ethernet cable between the PC and the panel either directly or via a switch/hub.
- 7) Open the ProSafe Software.
- 8) Select the corresponding Device under **“Device type”** and insert the **IP address** of the Device.
- 9) Select the **OS Update** tab
 - a. If the device is to be updated: Chose the location of the update file to be used by clicking the **“...”** button and press the **“Update OS”**.
 - b. If the device is to be factory reset: Chose **“Restore to factory settings”** and press the **“Update OS”**.



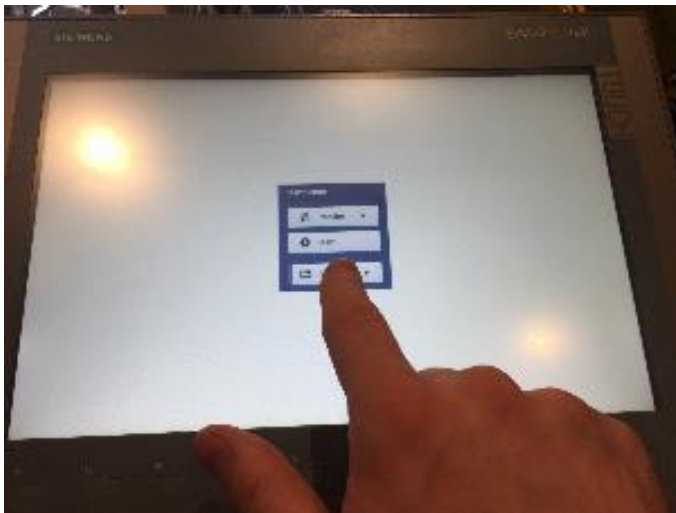
USB method

Backup

- 1) Put a USB pin drive in to the USB port on the back of the panel
- 2) Power cycle (turn off and on) the panel by pulling out and reattaching the green plug on the back of the panel. Be aware to go to next step whit in 3 seconds.



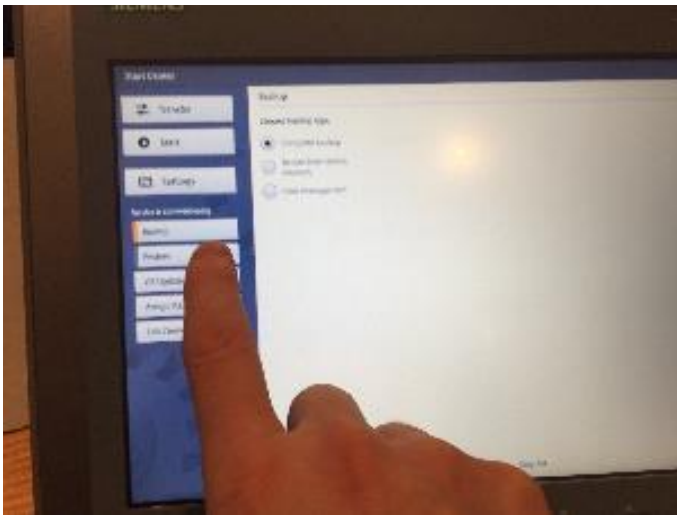
- 3) Push the **Settings** button before the TG raf screen appears. If the TG raf screen appeared, then redo step 3 and 4.



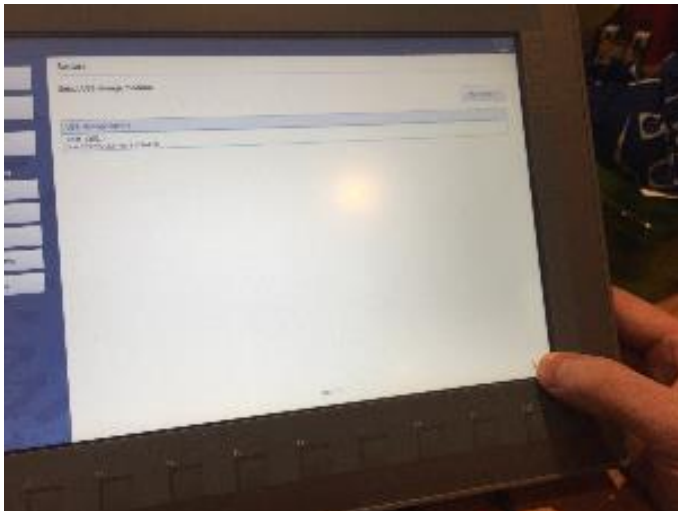
4) Push the **Service & Commissioning** button



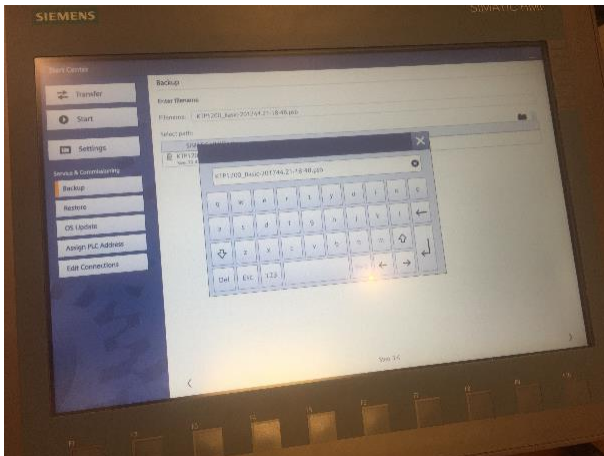
5) Push the **Backup** button



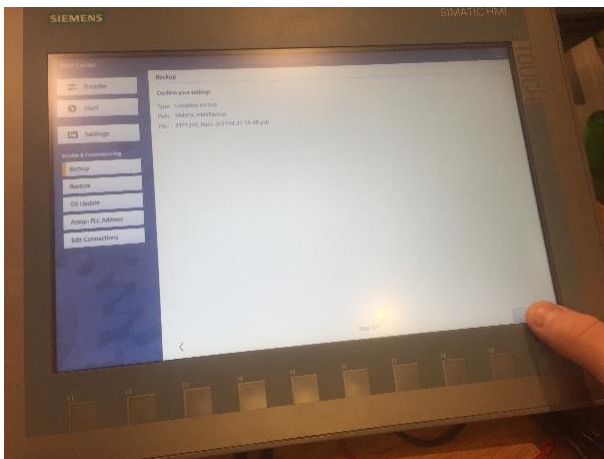
6) Make sure **Complete backup** is chosen and push the > button twice



- 7) Give the backup file a name and push the > button twice

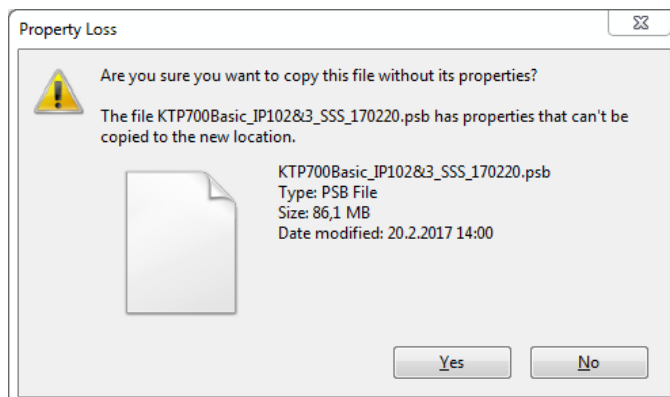


- 8) Push the **Accept** button



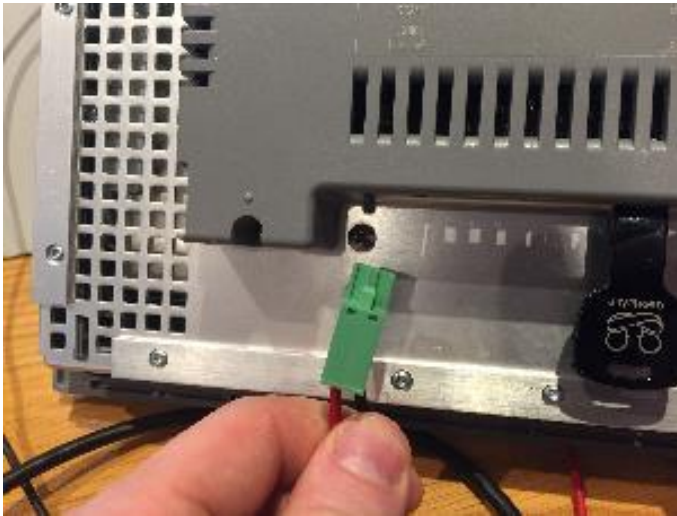
Restore

- 1) Copy the backup file from its location over to a USB pin drive
 - a. Select **YES** If this window appears

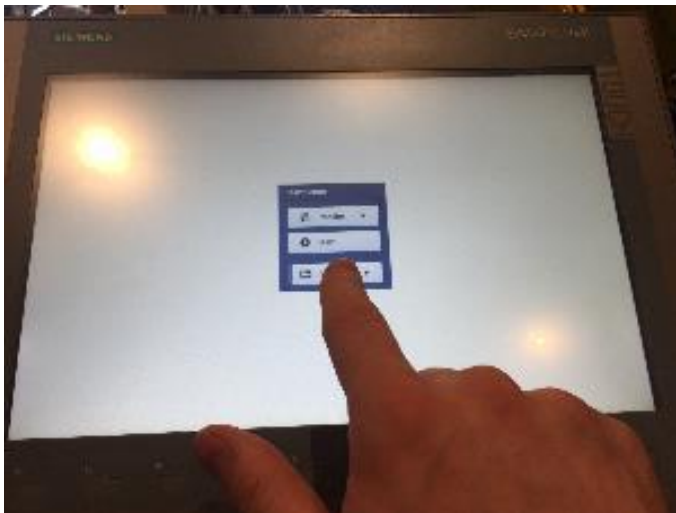


- 2) Put the USB pin drive in to the USB port on the back of the panel

- 3) Power cycle (turn off and on) the panel by pulling out and reattaching the green plug on the back of the panel. Be aware to go to next step whit in 3 seconds



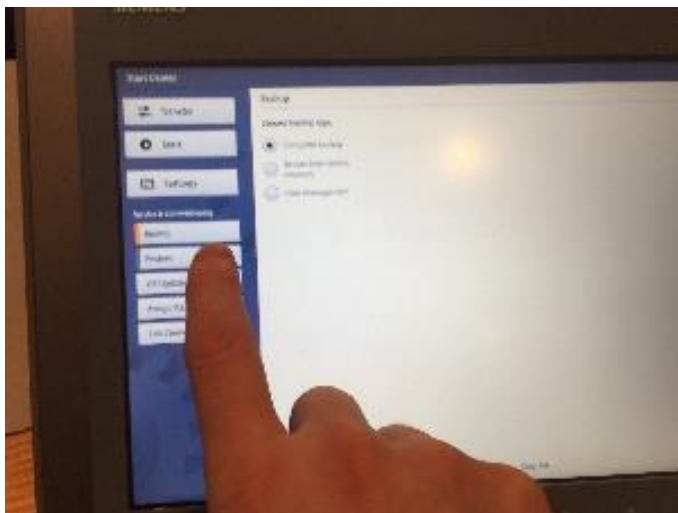
- 4) Push the **Settings** button before the TG raf screen appears. If the TG raf screen appeared, then redo step 3 and 4.



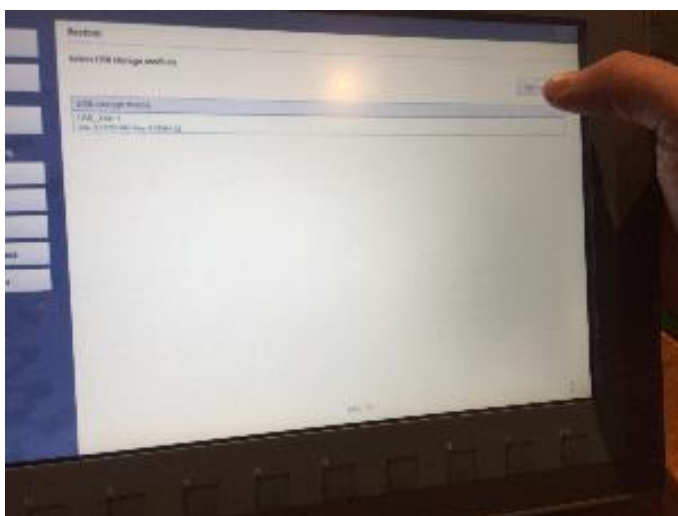
5) Push the **Service & Commissioning** button



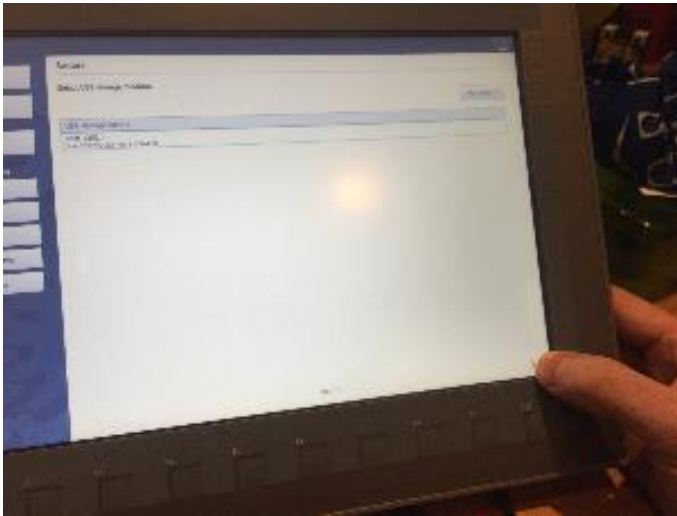
6) Push the **Restore** button



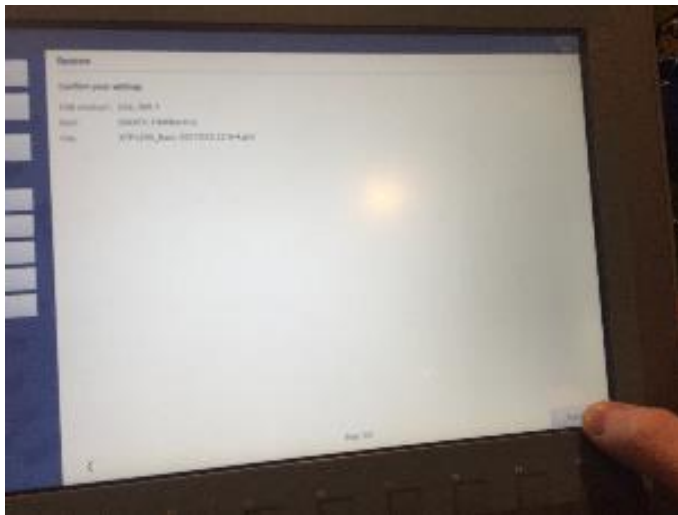
7) Push the **Start search** button



8) Push the > button twice



9) Push the **Accept** button





TG raf ehf.

Staðarsund 7 | 240 Grindavík | Iceland

Tel: +354 426 76 60 | Mobile: +354 781 21 31 (Arinbjörn Kristinsson)